



Financial Data on WRDS : Contents, Analysis and Methods of Access

Mark Keintz
Senior Data Analyst

Agenda

- 1 What is WRDS?
- 2 Accessing the Data
- 3 Sources of Financial Data
- 4 The Big Two: Compustat and CRSP
- 5 Advanced Access Features/ Using SAS at WRDS

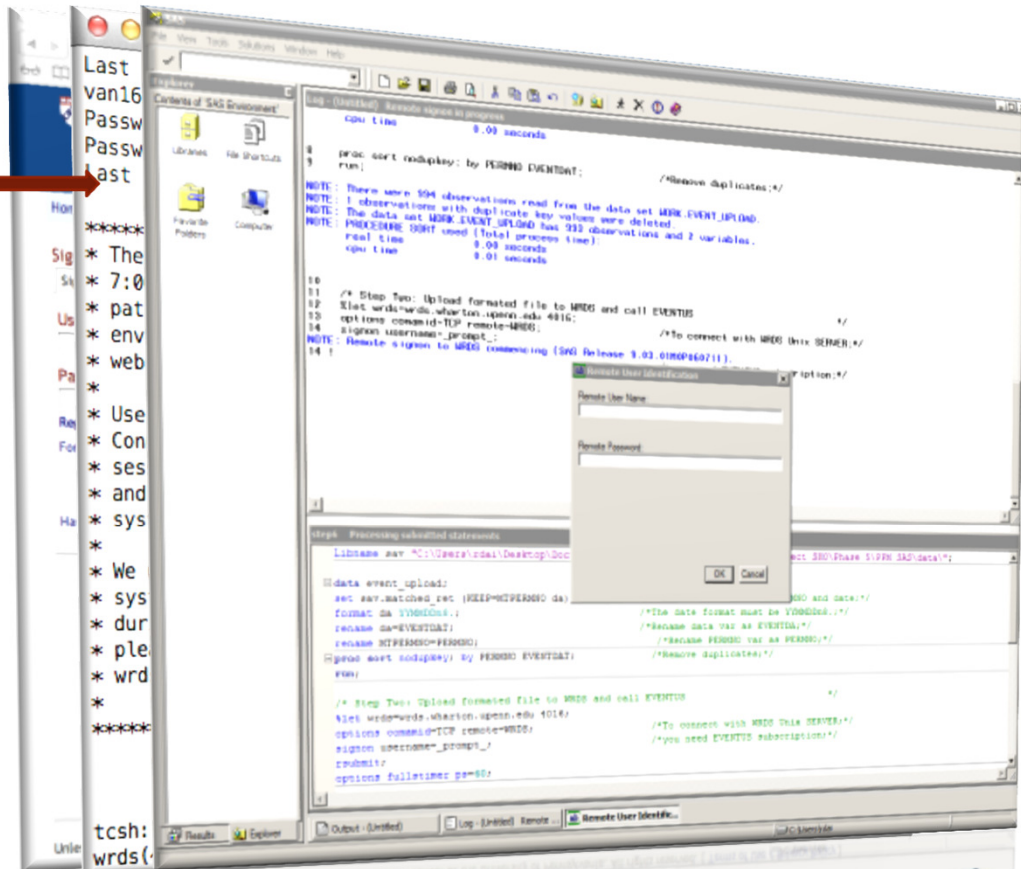
WRDS Overview

- + Single source for leading business research databases
 - + Accounting, Stocks, Bonds, Loans, Banking, Insurance, Real Estate, Economics, Marketing, Statistics, and +
 - + Standardized queries: Query + Variable Documentation + List of Manuals, & Research Overviews and Applications
 - + Linkage across different data sources, e.g. accounting data with stock market data
- + Full-time research and technical support
 - + Online help, email support, and 24/7 network monitoring
 - + Data Overviews, Research Applications, and Knowledge Base

Multiple Access Options:

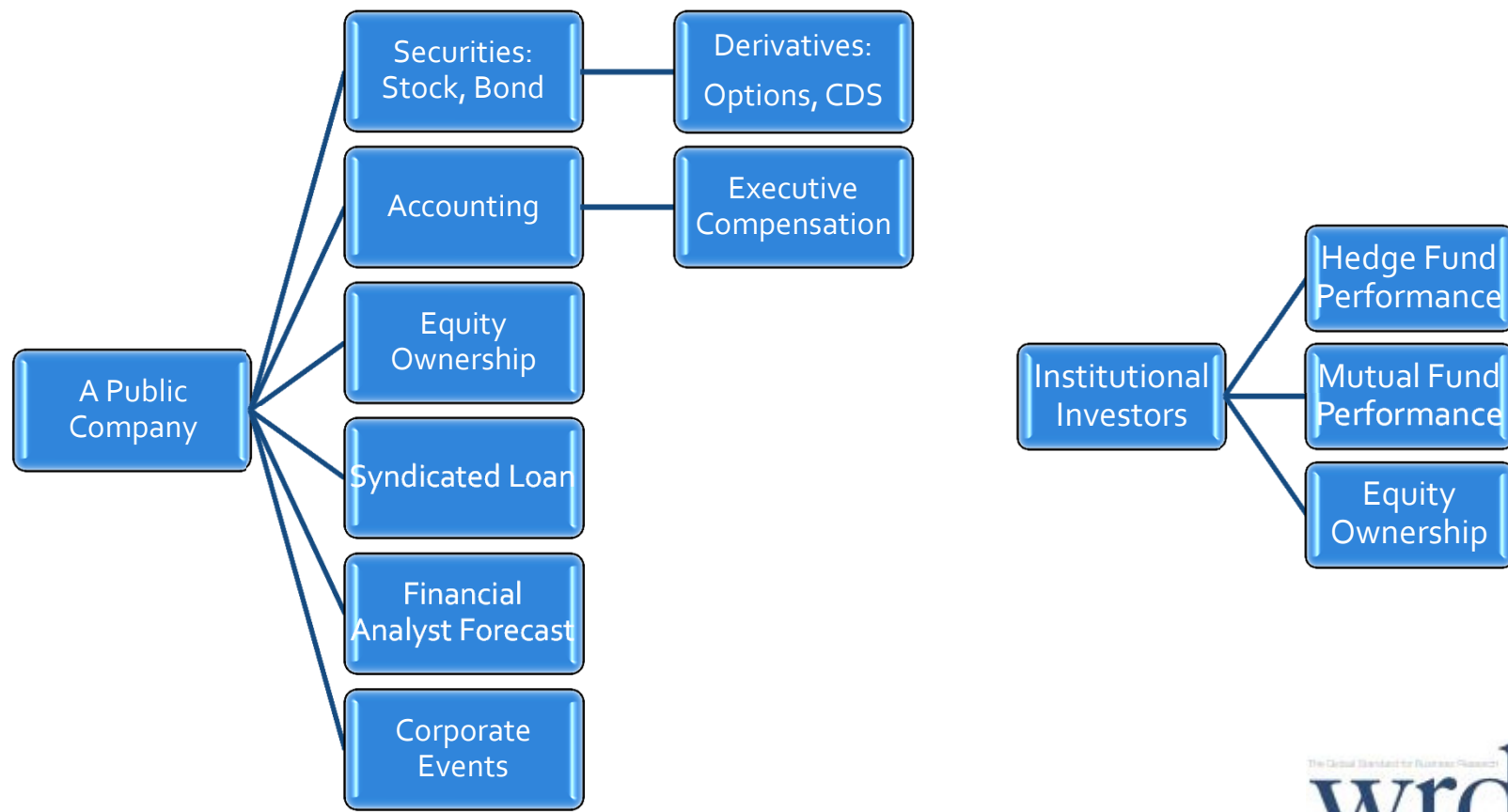


- **Web Queries:** Compatible with Various Browsers and Operating Systems
- **Unix Logon:** Large Data Manipulation
- **PC SAS/CONNECT:** Interactive Interface

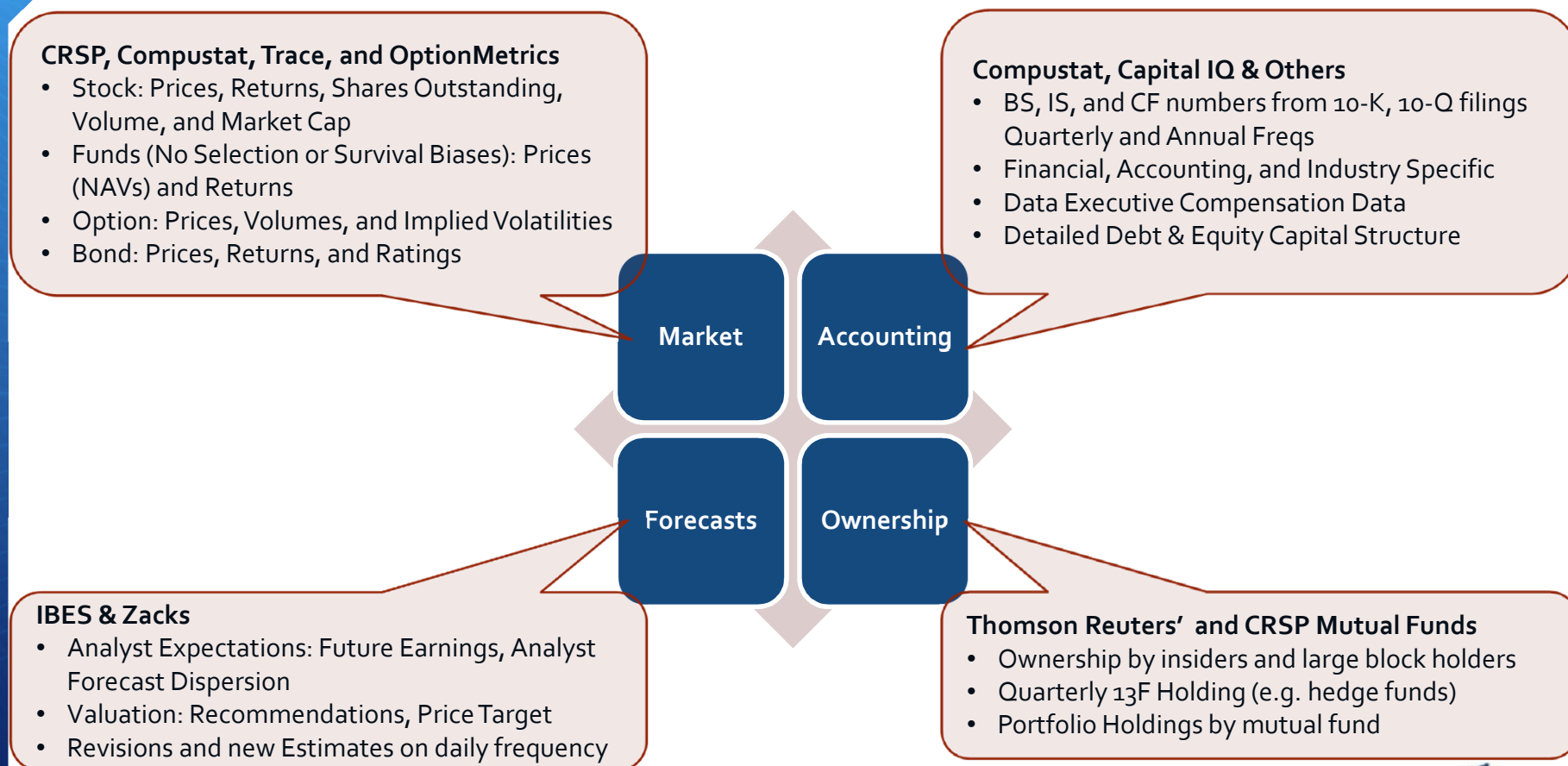


wrds

Financial Information by Source



Financial Information Integration



Compustat :Accounting and Financial Data

- + Compustat North-America: U.S. and Canadian fundamental and market information on 31,000+ active and inactive public companies, from 1950-present
- + Fundamental data available on an annual and quarterly frequencies with thousands of Income Statement, Balance Sheet, Statement of Cash Flows, and supplemental & industry-specific data items
- + Market data available on a monthly and daily frequencies with Prices, Dividends, Returns, Trading Volume , Shares Outstanding and Short-Interest Information (Very Similar to CRSP in many dimensions)

Compustat NA Example

- + Get Current Assets, Inventories and Long-Term Debt for Microsoft, Dell, and IBM between Jan 2000 and April 2009

[Index: Constituents](#)
[Index: Fundamentals](#)
[Index: Prices](#)
[Industry Specific Annual](#)
[Industry Specific Quarterly](#)
[Pension Annual](#)
[Pension Quarterly](#)
[Ratings](#)
[Security Monthly](#)
Compustat North America - Updated Annually
[Fundamentals Annual](#)
[Fundamentals Quarterly](#)
[Industry Specific Annual](#)
[Industry Specific Quarterly](#)
[Pension Annual](#)
[Pension Quarterly](#)
[Ratings](#)
[Security Monthly](#)
Emerging Markets Data Base (EMDB)
[Daily Stock File](#)
[Monthly Market](#)
[Monthly Global Indices](#)
[Monthly Investable Indices](#)
[Monthly Stock File](#)
[Daily Index File](#)
[Stock ID File](#)
Executive Compensation
[Annual Compensation](#)
[Company Financial and Director Compensation for 2005 and prior](#)
[Deferred Compensation](#)
[Director Compensation](#)
[Long Term Incentive Awards - 1992 Format](#)
[Outstanding Equity Awards](#)

Step 1: What date range do you want to use?
Datadate is the reporting date for a record; for annual data it is the last calendar day of the year.
Most companies report annual data on December 31.
(Admin Edit - FormStep1)
Date Variable: ☒ Datadate ☐ Fiscal Year
I would like data from Jan 2000 to Apr 2009

Step 2: How would you like to search this dataset?
(Admin Edit - FormStep2)
What format are your company codes?
☒ TIC
☐ GVKEY
☐ CUSIP
☐ SIC
☐ NAICS
☐ CIK

[How does this work?](#)
☒ Manually enter Company code
☒ Company Code (Code Lookup)
MSFT IBM DELL
Please enter Company codes separated by a space.
Example: IBM MSFT DELL

Balance Sheet Items (3 of 386 selected)
Select the items you would like to include in your search. For more information on each code, use the corresponding help link.

| | |
|---|---|
| <input checked="" type="checkbox"/> DLTT -- Long-Term Debt - Total | Selected Items <input checked="" type="checkbox"/> ACT -- Current Assets - Total <input checked="" type="checkbox"/> INVT -- Inventories - Total <input checked="" type="checkbox"/> DLTT -- Long-Term Debt - Total |
| <input type="checkbox"/> DM -- Debt Mortgages & Other Secured | |
| <input type="checkbox"/> DN -- Debt Notes | |
| <input type="checkbox"/> DPACB -- Depreciation (Accumulated) Buildings | |
| <input type="checkbox"/> DPACC -- Depreciation (Accumulated) Construction in Progress | |
| <input type="checkbox"/> DPACLI -- Depreciation (Accumulated) Land and Improvements | |
| <input type="checkbox"/> DPACLS -- Depreciation (Accumulated) Leases | |
| <input type="checkbox"/> DPACME -- Depreciation (Accumulated) Machinery and Equipment | |
| <input type="checkbox"/> DPACNR -- Depreciation (Accumulated) Natural Resources | |
| <input type="checkbox"/> DPACO -- Depreciation (Accumulated) Other | |
| <input type="checkbox"/> DPACRE -- Accumulated Depreciation of RE Property | |
| <input type="checkbox"/> DPACR -- Depreciation (Accumulated) Real Estate | |
| <input type="checkbox"/> DPACR -- Depreciation (Accumulated) Real Estate | |
| <input type="checkbox"/> DPACR -- Depreciation (Accumulated) Real Estate | |
| <input type="checkbox"/> DPACR -- Depreciation (Accumulated) Real Estate | |

Check All | Uncheck All



The Global Standard for Business Research
wrds

WRDS Support: Compustat

- + Overview to Compustat XPressfeed Database

[Support](#) → [Data](#) → [Manuals And Overviews](#) → [Compustat](#) → [General](#) → [Overview of Compustat Expressfeed](#)

- + Sample Programs (extracts, point-in-time, etc)

[Support](#) → [Data](#) → [Sample Programs](#) → [Compustat](#) → [Compustat Sample Programs](#)

- + Research Applications (book-to-market, P/E Ratio)

[Research](#) → [Applications](#) → [Wharton Research Data Services](#)

CRSP: Stock Market Data

- + Center for Research in Security Prices (CRSP) is a research center at the Booth School of Business of the University of Chicago
- + Comprehensive collection of daily and monthly security price, return, and volume data for the NYSE/AMEX/NASDAQ/ARCA trading venues
- + Daily and Monthly data for roughly 28,000+ securities of Domestic companies and ADRs traded on major exchanges (NYSE/AMEX/Nasdaq/ARCA), from 1925–present
- + Complete historical information (bias-free):
 - + Accurate records of special distributions and stock splits in return calculation
 - + Keep delisting companies (pre-M&A or bankruptcies), and delisting returns

CRSP Example

+ Get monthly prices, return and volume information for Microsoft and Ford from 1925 to 2008

CRSP

Annual Update
Monthly Stocks
Monthly Stock File
Monthly Market Indices
Daily Stocks
CRSP/COMPUSTAT Merged
Fama TBILL Structures
Indices/Deciles: Annual
Indices/Deciles: Daily
Indices/Deciles: Monthly
Indices/Deciles: Portfolio Assignments
Indices/Deciles: Quarterly
Indices/Deciles: Treasury and Inflation
Monthly Treasuries
Daily Treasury
Tools

Mutual Funds
Mutual Funds

Ziman REIT
Ziman REIT

Quarterly Update
Monthly Stocks
Daily Stocks
CRSP/COMPUSTAT Merged
Fama TBILL Structures
Indices/Deciles: Annual
Indices/Deciles: Daily
Indices/Deciles: Monthly
Indices/Deciles: Portfolio

For more about this dataset, see the [Variable Descriptions](#), [Dataset List](#), [Manuals and Overviews](#) or [FAQs](#).

Step 1: What date range do you want to use?
(Admin Edit - FormStep1)

I would like data from Jan 1925 to Dec 2008

Step 2: How would you like to search this dataset?
(Admin Edit - FormStep2)

What format are your company codes?

☒ TICKER
☐ PERMNO
☐ PERMCO
☐ CUSIP
☐ NCUSIP
☐ HSICCD
☐ SICCD

How does this work?
☒ Manually enter Company code

Company Code [Code Lookup]
msft f

Time Series Information (3 of 11 selected)

Select the items you would like to include in your search. For more information on each code, use the corresponding help link.

| | |
|--|---|
| <input checked="" type="checkbox"/> Price | ? |
| <input type="checkbox"/> Price Alternate | ? |
| <input type="checkbox"/> Price Alternate Date | ? |
| <input type="checkbox"/> Ask or High | ? |
| <input type="checkbox"/> Bid or Low | ? |
| <input type="checkbox"/> Closing Bid | ? |
| <input type="checkbox"/> Closing Ask | ? |
| <input checked="" type="checkbox"/> Share Volume | ? |
| <input checked="" type="checkbox"/> Holding Period Return | ? |
| <input type="checkbox"/> Spread Between Bid and Ask | ? |
| <input type="checkbox"/> Holding Period Return without Dividends | ? |

Check All | Uncheck All


Selected Items

- ☒ Price
- ☒ Share Volume
- ☒ Holding Period Return

HIDE ↑

Indicated for Business Research

wrds



WRDS Support: CRSP

+ Overview of CRSP/Compustat Merged Database in WRDS

[Support → Data → Manuals And Overviews → CRSP → CRSP Manuals and Overviews](#)

+ Sample Programs

+ Data Extracts, CCM and merging by CUSIP

+ Calculate CAPM beta and excess returns

[Support → Data → Sample Programs → CRSP → CRSP Sample Programs](#)

+ Research Applications

+ Compound returns

+ Momentum and Governance Portfolios,

+ Fama-French factors and B/M portfolios,

+ Beta Estimation

[Research → Applications → Wharton Research Data Services](#)

Link CRSP and Compustat

- + **CRSP:** the data source for US security (equity) trading records.
 - + since 1925, and 28,673 Securities (until 2010)
- + **Compustat:** the data source of accounting items for US public firms
 - + since 1950 and 29,701 Companies (until 2010)
- + Major Difficulties to link CRSP and Compustat
 - + Different Frequencies:
 - + Compustat: Accounting items are on Annual or Quarter base
 - + CRSP: Security trading data is Monthly or Daily
 - + Different Universe of Companies
 - + CRSP: Equities listed in NYSE, AMEX, NASDAQ and ARCA
 - + Compustat: 10K and 10Q Filers to the SEC

Common Secondary Identifiers

- + **Stock Tickers:** Exchange Specific, with Suffixes, *NOT* Permanent, and Recyclable.
- + **CUSIP** also is *NOT* Permanent but Unique and *NOT* Exchange Specific.
 - + 8- or 9-digit CUSIP is assigned for issues (e.g. equities and bonds).
 - + 6-digit CUSIP is assigned for issuers (e.g. firms)
- + **CIK:** US filing number at the SEC, and Changeable
- + **Company Names** are often abbreviated/manipulated by data vendors
 - + Very difficult to have a reliable merging code by using company names

Identifiers in CRSP

| CRSP PERMANENT NUMBER | CRSP PERMANENT COMPANY NUMBER | START DATE OF EFFECTIVE NAME | END DATE OF EFFECTIVE NAME | CUSIP IDENTIFIER - HISTORICAL | EXCHANGE TICKER SYMBOL - HISTORICAL | COMPANY NAME - HISTORICAL |
|--------------------------|-------------------------------------|---------------------------------|-------------------------------|----------------------------------|---|--------------------------------|
| 86079 | 665 | 19801204 | 19890131 | 11003510 | BRST | BRISTOL GAMING CORP |
| 86079 | 665 | 19890201 | 19920419 | 11003520 | BRST | BRISTOL HOLDINGS INC |
| 86079 | 665 | 19920420 | 19950822 | 84892010 | SPTK | SPORTS TECH INC |
| 86079 | 665 | 19950823 | 19970630 | 01662710 | ALCM | ALL COMM MEDIA CORP |
| 86079 | 665 | 19970701 | 20010729 | 57090710 | MSGI | MARKETING SERVICES GROUP INC |
| 86079 | 665 | 20010730 | 20011014 | 57090710 | MKTG | MARKETING SERVICES GROUP INC |
| 86079 | 665 | 20011015 | 20020331 | 57090720 | MKTG | MARKETING SERVICES GROUP INC |
| 86079 | 665 | 20020401 | 20030126 | 55308X10 | MKTG | M K T G SERVICES INC |
| 86079 | 665 | 20030127 | 20031127 | 55308X30 | MKTG | M K T G SERVICES INC |
| 86079 | 665 | 20031128 | 20040111 | 55308X30 | MSGI | M K T G SERVICES INC |
| 86079 | 665 | 20040112 | 20050208 | 58445910 | MSGI | MEDIA SERVICES GROUP INC |
| 86079 | 665 | 20050209 | 20061019 | 55357010 | MSGI | M S G I SECURITY SOLUTIONS INC |

1 PERMNO
per stock

1 PERMCO
per company

10 Different
CUSIPs

5 Different
Tickers

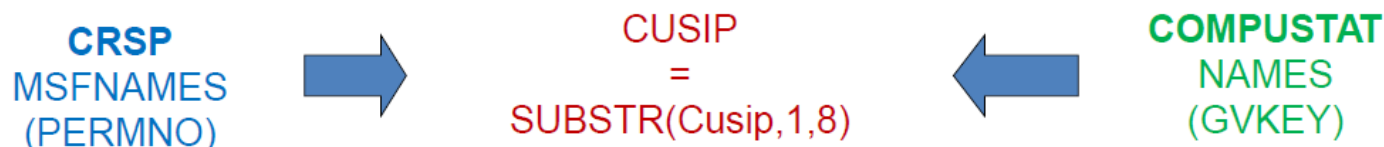
8 Different
Names

Primary Identifiers

- + The Primary Identifiers are different
 - + **Compustat**: GVKEY at firm level
 - + **CRSP**: PERMNO (PERMCO) at security (firm) level
- + **PERMNO** is a unique five-digit permanent identifier assigned by CRSP to each security: *Permanent*, and *Unique (Not Recyclable)*.
- + **GVKEY** is a unique six-digit identifier and primary key for each company and assigned by Compustat: *Permanent*, and *Unique (Not Recyclable)*.

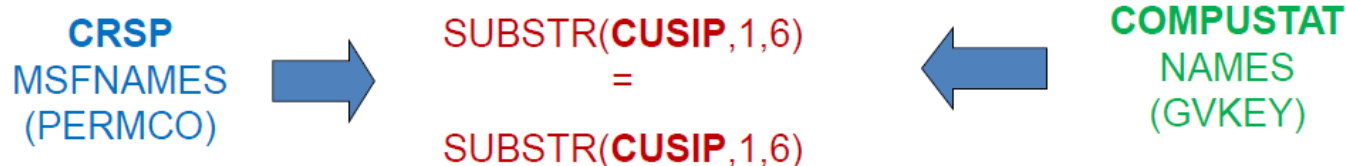
CRSP and Compustat CUSIP Match

Security level:



PERMNO-GVKEY match. It matches with the security that has price in Compustat.

Firm level:



PERMCO-GVKEY match. It still needs to come up with the 'main' PERMNO for each PERMCO.

CRSP/Compustat Merged Data (CCM)

- + CCM database is to allow researchers to lookup and extract Compustat data using the CRSP identifiers.
- + CCM contains only Compustat data items, but can be searched by CRSP's PERMNO and PERMCO in addition to Compustat's GVKEY.
- + CCM maintains the matching table between CRSP and Compustat
 - + Ideally, the matched firms are the ones listed in NYSE, AMEX, NASDAQ and ARCA and survived long enough to have the SEC filings

Advanced WRDS Features

Access Data Remotely on WRDS Server

+ What if a web query does not do all that you need it to do?

- + Web queries usually cannot handle the requests with > 2 conditions
- + Example: Find all companies in 1997 with sales greater than 1 billion, total assets greater than 5 billions, and with more than 30 years of publicly reported financial statements.

+ Two more ways to access finance data at WRDS

| | Advantage | Disadvantage |
|----------------|-------------------------|-------------------------|
| UNIX | Fast remote data access | Batch Running |
| PC-SAS/Connect | Interactive Programming | Slow remote data access |

- + Each method can perform a basic data extract and serve as the first step in a statistical analysis. The data can be analyzed remotely or imported into a local SAS system or even a second program to complete the analysis.

PC-SAS / Connect – Concept

- + SAS software installed on your Windows PC
 - + Some local SAS dataset in your PC
 - + Remote access WRDS data by connecting to WRDS server
 - + Use WRDS powerful Unix server processing resources
 - + Access Unix permanent (750MB) & temp (4.5TB) disk spaces
- + Steps:

1. Connect to WRDS server

```
%let wrds = wrds.wharton.upenn.edu 4016;  
options comamid = TCP remote = WRDS;  
signon username = _prompt_;
```

2. Remote Submit

```
rsubmit;  
    {Program}  
endrsubmit;
```

PC-SAS / Connect – An Example

- + Example: Find all companies in 1997^① with sales \geq 1 billion^②, total assets \geq 5 billions^③, and with \geq 30 years of publicly reported financial statements^④.

```
/* PC-SAS/Connect Communication Block */
%let wrds = wrds.wharton.upenn.edu 4016;
options comamid=TCP remote=WRDS;
signon username=_prompt_;

/* Submit SAS code to WRDS Unix Server */
rsubmit inheritlib=(work=pcwork);
```

```
/* SAS CODE submitted to WRDS Sever */
proc sql;
create table pcwork.demo(
where= (fyear=1997 and sale $\geq$ 1000 and at $\geq$ 5000
and firm_age $\geq$ 30)) as

select fyear, comn, tic, gvkey, sale, at,
(fyear - min(fyear)) as Firm_Age

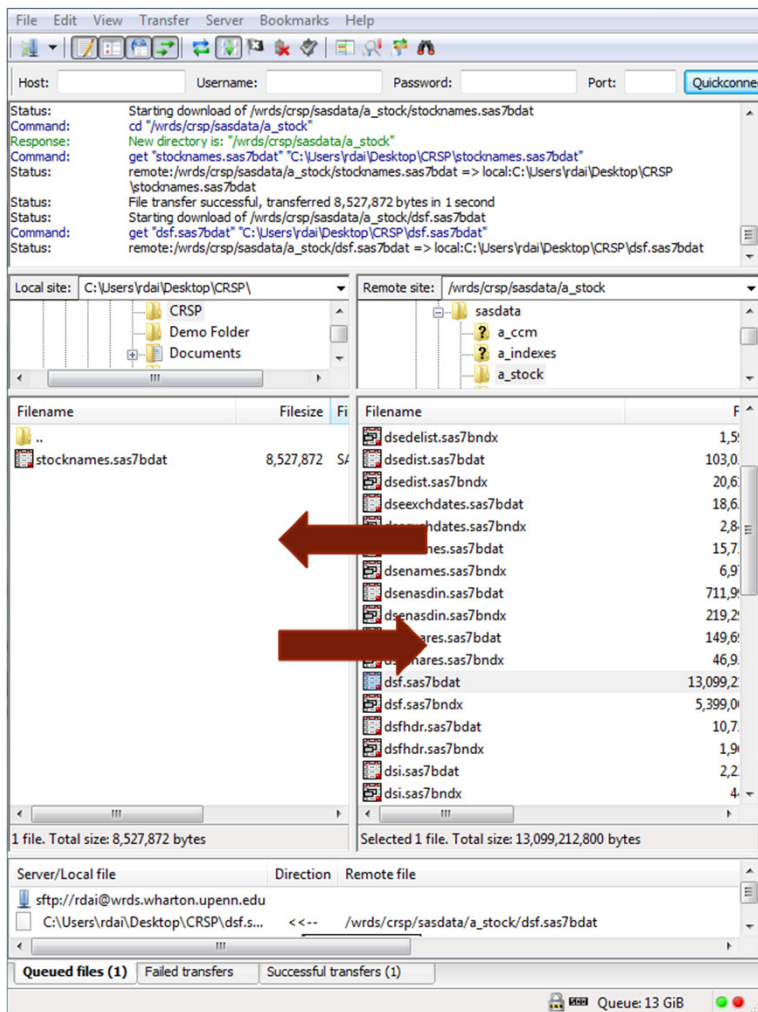
from comp.funda where not missing(at) and
consol="C" and indfmt="INDL" and datafmt="STD"
and popsrc="D"

group by gvkey;
quit;
```

```
/* Remote SAS CODE submission Ends */
endrsubmit;

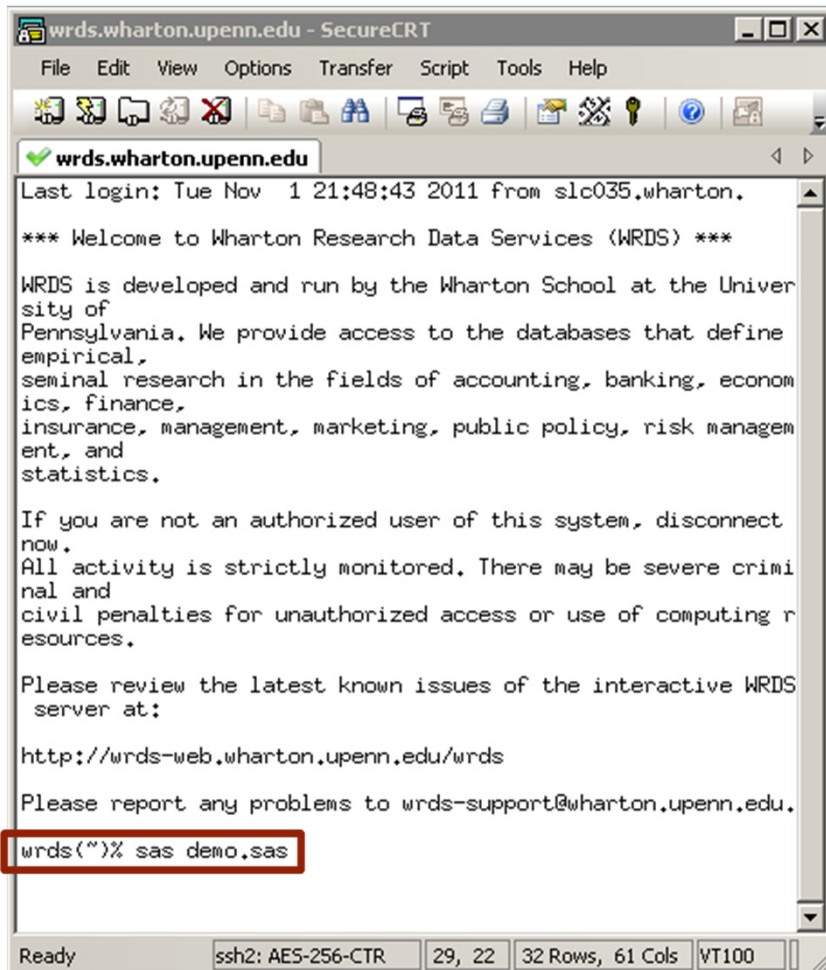
/* Sign off from PC-SAS/Connect */
Signoff;
```

How to Access SAS Data in UNIX?



1. Install SFTP Client software in your PC (freeware such as FileZilla).
2. Set SFTP Client to be connected to the server: wrds.wharton.upenn.edu with your wrds (wharton) username and password.
3. Retrieve and Upload files in SAS and other formats among your local machine and remote UNIX server.

How to run SAS in UNIX?



```
wrds.wharton.upenn.edu - SecureCRT
File Edit View Options Transfer Script Tools Help
wrds.wharton.upenn.edu
Last login: Tue Nov 1 21:48:43 2011 from slc035.wharton.
*** Welcome to Wharton Research Data Services (WRDS) ***
WRDS is developed and run by the Wharton School at the University of Pennsylvania. We provide access to the databases that define empirical, seminal research in the fields of accounting, banking, economics, finance, insurance, management, marketing, public policy, risk management, and statistics.
If you are not an authorized user of this system, disconnect now. All activity is strictly monitored. There may be severe criminal and civil penalties for unauthorized access or use of computing resources.
Please review the latest known issues of the interactive WRDS server at:
http://wrds-web.wharton.upenn.edu/wrds
Please report any problems to wrds-support@wharton.upenn.edu.
wrds(~)% sas demo.sas
```

1. Install SSH Secure Shell (free) software in your PC.
2. Set SSH to be connected to the server: wrds.wharton.upenn.edu with your wrds (wharton) username and password.
3. Create, Edit and Run your SAS program using Unix commands.

I don't know SAS

- + WRDS support page has a lot of documentation and material for SAS and Unix.
- + There are a lot of useful SAS Books. Among them:



Research and Technical Support

- + Online Help
 - + Database Manuals plus additional support documentation
 - + [Data Overviews](#)
 - + [Research Applications](#)
 - + [Sample Programs](#)
 - + [Variable Search](#)
 - + [Company Search](#)
 - + [WRDS Knowledge Base](#): FAQ archive of answers to common user questions
- + Email support at wrd-support@wharton.upenn.edu (Monday-Friday, 9a-5p EST)
Researchers and Technical Experts ready to assist with:
 - + Data extraction, merging, and management.
 - + Programming and technical problems

Other Questions?